



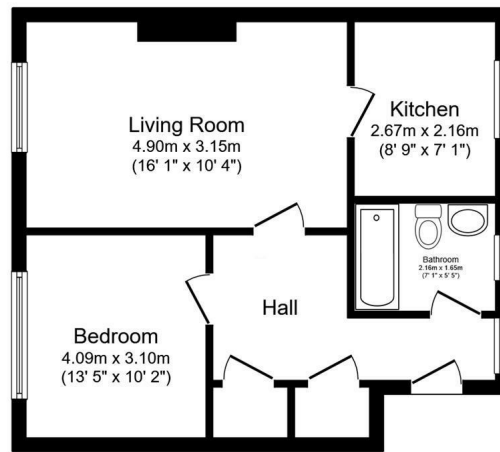
PICKFORD GARDENS BERKSHIRE, SL1 3GQ

Welcome to this charming one-bedroom flat located in the desirable area of Pickford Gardens, Slough, Berkshire. Situated on the first floor of a purpose-built block, this property offers a comfortable and convenient living space, perfect for individuals or couples seeking a modern lifestyle.

As you enter the flat, you are greeted by a well-proportioned reception room

£1,050 Per





Floor Plan

Floor area 43.8 m² (471 sq.ft.)

TOTAL: 43.8 m² (471 sq.ft.)

This floor plan is for illustrative purposes only. It is not drawn to scale. Any measurements, floor areas (including any total floor area), openings and orientations are approximate. No details are guaranteed, they cannot be relied upon for any purpose and do not form any part of any agreement. No liability is taken for any error, omission or misstatement. A party must rely upon its own inspection(s). Powered by www.Propertybox.io

that provides a warm and inviting atmosphere, ideal for relaxation or entertaining guests. The layout is designed to maximise space and light, creating a pleasant environment to unwind after a long day.

The bedroom is a cosy retreat, offering ample room for furnishings and personal touches. It is a perfect sanctuary for restful nights and peaceful mornings. The bathroom is well-appointed, featuring modern fixtures and fittings, ensuring both comfort and practicality.

This flat is not only a lovely home but also benefits from its prime location. Slough is known for its excellent transport links, making it easy to commute to London and other surrounding areas. Additionally, the local amenities, including shops, restaurants, and parks, are all within easy reach, enhancing the convenience of daily living.

Whether you are looking to rent your first home or seeking a comfortable space to downsize, this one-bedroom flat in Pickford Gardens is an excellent choice. With its appealing features and prime location, it is sure to attract interest. Do not miss the opportunity to make this delightful property your new home.

- Available 7th April 2025
- 0.8 Miles from Slough Train Station (Main Paddington Line and Crossrail Station - 20 minutes to Central London)
- First floor apartment
- Walking distance to Slough High Street
- Secure entry system
- Easy access to M4 Motorway (Junction 6)
- Permit parking available
- Close to local amenities



**cameron
king**
ESTATE AGENTS

411 Bath Road, Slough, SL1 5QL
t: 01628 667442
e: sales@cameronking.co.uk



rightmove

Zoopla

PrimeLocation.com